

THE WSPEI CONNECTOR

April 2025

✿Communicating information and resources for Wisconsin Families and Educators

As we look out our windows, we can see nature shifting from the cold of winter to the warmth of spring, with summer not far behind. This change is just one example of the many transitions we encounter in life.

When we talk about "transition" in the context of students with an IEP, we're referring to planning for life after high school or aging out of the public school system.



Understanding the resources and supports available for this transition is a big topic for many families and students. Given the breadth of the subject, we'll be looking at the different aspects of the Transition process over the next three issues of the WSPEI Connector.

This month we will share overview information, learn about guardianship and supported decision making, and self-advocacy. In May, we will dive into post-secondary(college) options. In June we will explore work and employment related topics.

As always, we share with you a variety of events and opportunities, both in-person and online, where we can come together to learn about important disability related topics.

Wishing you a bright Spring from the WSPEI Team!

Learning Events from The WSPEI Project



Workshops, Book Discussions and Networking Opportunities

Workshops, Book Discussions and Networking Opportunities

All WSPEI learning events are FREE, will be held virtually on ZOOM and are open to families, educators and community agency members.

[Calendar of Events](#)

[Webpage to link directly to Registration Forms](#)

TOPIC SPECIFIC WORKSHOPS

Finding Children with Disabilities:

What School Districts, Families, and Agencies Need to Know about IDEA and Child Find Law

Do you suspect a child may need extra supports?

This workshop will explore the responsibility of school districts to locate, identify and evaluate all children suspected of having a disability and the rights families and children have under IDEA law.

- Wednesday, April 9, 2025, 4:00 p.m. - 6:00 p.m.
- All are welcome! Families, Educators, Community Organizations and Agencies

[Link to Flyer with Details and Registration Information](#)

[Click Here for Registration Form](#)

Partnering with Schools on Behavior and Discipline for Students with IEPs.

This workshop will help participants understand how all policies apply to all children, including those with disabilities; build awareness of IDEA protections for students with disabilities in regard to discipline; understand dispute resolution options in Wisconsin.

- April 24th, 2025 9:00 a.m. - 11:00 a.m.
- All are welcome! Families, Educators, Community Organizations and Agencies

[Link to Flyer with Details and Registration Information](#)

[CLICK HERE FOR REGISTRATION FORM](#)

MONTHLY NETWORKING & LEARNING MEETINGS

REGISTER FOR THESE EVENTS ANYTIME!

Family Support Community

A monthly learning opportunity designed for families and other caregivers supporting a child(ren) with a disability. Two meeting options are available.

- The first Wednesday of the month from 7-8 pm: [REGISTER FOR WEDNESDAY FSC HERE](#)
- The first Thursday of every month from 12-1:00 pm: [REGISTER FOR THURSDAY FSC HERE](#)
- Our Community meetings provide valuable learning opportunities and mutual support.
- These meetings take place from September through May.

Link to:

[FLYER and Registration](#)

[Flyer in Spanish](#)

Family Engagement Community of Practice & Learning

A learning community for educators, administrators, statewide agencies, community partners, and families focusing on family engagement specific topics. Come join us!

- Meetings are held the third Wednesday of every month September to May, 4:00-5:30 pm.
- Registration is required - register once and you are able to attend any monthly meeting!

[Click Here to Register for CoPL](#)

[FLYER with Monthly Topic and Dates](#)

[Flyer in Spanish](#)

The Wisconsin Department of Public Instruction

The Wisconsin Department of Public Instruction [has launched a new webpage](#) dedicated to providing real-time updates, critical information, and resources related to federal funding for public schools and libraries across the state.

The tools available on the webpage include real-time updates on current funding cuts at the federal level and [an interactive map](#) that enables the public to view district-specific data on the impact of federal funding. This map provides detailed breakdowns from the U.S. Department of Education and the U.S. Department of Agriculture, showing the total amount of federal funds received, the number of full-time educators supported by U.S. Department of Education funding, and the percentage of federal funding relative to each district's revenue limit.

The DPI encourages all school and library leaders, educators, and community members to utilize these resources to better understand the crucial role of federal funding and communicate its importance to their school communities.

Wisconsin Conferences

.....

[36th Annual Autism Conference](#)

This statewide conference brings the autism community together to learn, connect, and belong. It's a place where autistic adults, parents and family members, and professionals come to share experiences and learn together.

Dates: April 3-5, 2025

Location: Kalahari Convention Center, Wisconsin Dells, WI

Annual Wisconsin "Staycation" and Autism Summit

Call for Presenter proposals - [click here to submit](#)

We encourage all interested individuals and organizations within the Autism community to submit their proposals for this exciting event. This conference aims to be a valuable resource for attendees, and we look forward to reviewing your submissions.

Deadline for Proposal Submissions: Friday, April 11, 2024

Dates: July 11-12, 2025

Location: Wilderness Resort, Wisconsin Dells, WI

[Endless Possibilities Conference Wisconsin | WI FACETS](#)

Keynote: Mike Hipple ([WI AAC Network](#))

Bridging Success: Empowering Diverse Learners

Through accommodations, technology and innovation, educators and families can help students thrive in school and prepare for success after school. We will learn about Augmentative and Assistive Communication, how to support engaged readers, and learn what others are doing to support positive outcomes for students with disabilities to achieve their goals.

Date: Tuesday, August 5, 2025, 8:30 a.m. - 3:00 p.m.

Location: Waukesha Area Technical College, Pewaukee, WI

Registration is OPEN! Link to [Registration Here](#)

Self-Determination by Design: Your Life, Your Way

Dates: October 20 - 22, 2025

Location: Kalahari Resort, Wisconsin Dells, WI

For more information, visit: www.sdc.wi-bpdd.org

Registration Opens: July 1, 2025

Save the Date and mark your calendars now!

[2025 Children Come First Conference](#)

Dates: November 3rd-4th, 2025

Location: Kalahari Resort • Wisconsin Dells, WI

As one of the largest and longest-running family-driven events in the state, this conference is dedicated to addressing the pressing needs of children and families living with mental and behavioral health issues.

WI FACETS

WI FACETS is Wisconsin's Parent Training and Information Center (PTI) funded through the US Department of Education, Office of Special Education Programs. WI FACETS has a large variety of resources, upcoming trainings, and webinar recordings to help families navigate special education. Check out the WI FACETS [Training Calendar](#), WI FACETS [Webinar Recordings](#) as well as WI FACETS [resources webpages](#).

The APRIL edition of the WI FACETS newsletter focuses on Autism Spectrum Disorder.

[Link to April Newsletter - English](#)

[Link to April Newsletter - Spanish](#)

Transition Planning for Students with Disabilities

Looking to the Future

What is Transition Planning for Students with disabilities?

- A Path to College, Career, and Community Readiness
- A focus on the child/student's preferences, interests, needs and strengths
- Leads to successful post-secondary outcomes through student led transition goals
- Coordinated set of activities/Multi-year plan
- Coordination with agencies, services, and community resources to meet student goals
- Robust transition planning through educational and community opportunities that are relevant to the student and family
- By **14 years of age**, the IEP must contain a Postsecondary Transition Plan (PTP).
- Every student's PTP must include:
 1. Measurable Postsecondary Goals
 2. Course of Study
 3. Transition Services

What is the Postsecondary Transition Plan(PTP)

The PTP is a part of the IEP which focuses on transition. A PTP is written with the IEP team, which includes the student, when a student is 13 turning 14 during the timeframe of their IEP.

A PTP **must** include measurable postsecondary goals for students related to:

- training/education,
- employment,
- independent living skills (if appropriate), and
- a description of transition services including courses of study needed to assist the students in reaching their goals.

Resources to provide ideas and an understanding of Transition Planning and the PTP:

- [Transition Programming Beyond Age 18](#) is a great resource for parents regarding transition planning,
- [Parent's Guide to the Post Secondary Transition Plan \(PTP\)](#) for more information.
- [The Transition Action Guide](#)(TAG) was created to provide a resource to educate all partners on their roles and responsibilities in the transition process.

The [WiTransition App](#) was designed to increase self-direction, self-advocacy and share the student voice for all Wisconsin youth with disabilities in the transition planning process. After completing their plan using the WiTransition App, students can email themselves or others to share during an IEP and PTP meeting!

Self-Advocacy & Self-Determination:

- Learning to speak up about thoughts, goals, and needs in a positive, assertive way
- Attend your IEP meetings, share ideas, dreams and participate in developing goals.
- Add a Self Advocacy Goal to the IEP

Self-Determination means:

- Control your own life choices

- Know about yourself, what are your personal strengths and challenges, setting and sharing goals, you might take an assessment to help with this,
- Select support people and services to help you work toward your goals - who is on your team
- This starts as early as Kindergarten
- [Opening Door to Self Determination](#)

This fantastic website provides topic resources and action steps for families and youth to consider before turning 18 years old.

Check it out! [Before Age 18](#)

Supported Decision-Making

Supported Decision Making enables people with disabilities to ask for support where and when they need it. Powers of attorney, representative payees and simple release of information forms can also help families provide the needed support and safeguards without going to court and imposing guardianship restrictions.

The Wisconsin Board for People with Developmental Disabilities (BPDD) has put together a toolkit of resources to help individuals with disabilities and their supporters to create a plan and to fill out official forms using the Supported Decision-Making paperwork: [Supported Decision-Making Tool Kit](#).

The [Information Update Bulletin 19.01 Supported Decision Making](#) bulletin provides information on supported decision-making agreements that may help school districts to understand the process and to accurately inform students and their families.

Guardianship

A guardian for an adult is a person or agency appointed by a court to act for an adult who has been found to have a functional impairment in decision-making or communication that meets the legal standard for a finding of incompetence.

IMPORTANT! Guardianship required training: Beginning January 1, 2023, every individual nominated to be a guardian of the person or the estate on or after January 1, 2023, must **[complete training on a variety of topics, and submit a sworn, notarized affidavit of such prior to the final guardianship hearing.](#)**

An additional resource has been designed by the Wisconsin Board for People with Developmental Disabilities titled "[Let's Talk about Rights: A Guide for Families and Guardians](#)" to provide information regarding guardianship and decision making for adults with disabilities.

CONSIDERATIONS FOR FAMILIES, STUDENTS AND EDUCATORS:

- START TRANSITION PLANNING EARLY
- IF YOU DON'T UNDERSTAND THE TRANSITION PROCESS AND ITS IMPORTANCE, PLEASE ASK
- ASK FOR A MEETING LOCATION/SPACE YOU FEEL SAFE TO SHARE YOUR THOUGHTS AND IDEAS
- WORK WITH THE CHILD/STUDENT TO DEVELOP SELF ADVOCACY SKILLS NEEDED TO FULLY PARTICIPATE IN THEIR MEETING AND WHY IT IS IMPORTANT TO DOING SO
- SHARE YOUR FAMILY/CULTURAL VALUES AND THE IMPORTANCE OF THESE VALUES THROUGHOUT THE TRANSITION PLANNING PROCESS
- DETERMINE IF THE CHILD HAS A RELATIONSHIP WITH AN ADULT THAT ALLOWS THEM TO FEEL CONNECTED, GROW, AND SHARE. IS THAT PERSON INVITED TO THE IEP MEETING?
- BE PREPARED TO HELP THE CHILD/STUDENT UNDERSTAND OPTIONS AND OPPORTUNITIES-MAKE CONNECTIONS
- LEARN AND GROW TOGETHER, IT TAKES A VILLAGE

Learn more! Join this informal, monthly support group!

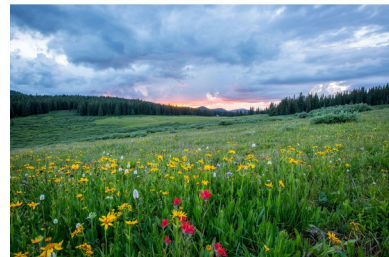
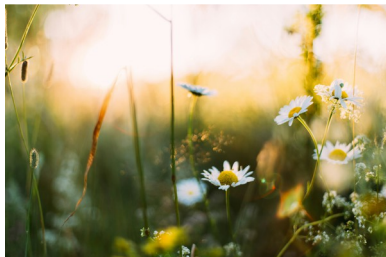
Brought to you by a group of Impassioned Parents and the Youth Health Transition Initiative

Transition Table Talk is casual, low-pressure online Zoom Chat where parents and caregivers can connect, share what's working, exchange ideas, ask questions, and support each other through the ups and downs of raising kids. No experts, no lectures-just families helping families.

We meet on the 4th Wednesday of the month from 12-1:00 p.m.

- 4/23 -- Why does age 14 suddenly feel like a big deal?;
- 5/28 -- How do we help our kids find their voice?;
- 6/25 -- Let's talk transition! What's on your mind?
- Registration: [Transition Table Talk](#)
- Flyer: [TransitionTableTalk](#)

The IRIS Center recently revised its training module [Secondary Transition: Helping Students with Disabilities Plan for Postsecondary Settings](#). This module focuses on helping students with disabilities successfully transition from high school to postsecondary settings. Among other topics, it discusses the various components of transition planning and the importance of engaging students in this process.



New from the Wisconsin Department of Health Services

CLTS Program Handbook

We're excited to share that the [Children's Long-Term Support \(CLTS\) Program Participant and Family Handbook](#) is now available! This easy-to-use handbook was developed with input from families and program partners to help participants better understand the CLTS Program, access supports and services and navigate key transitions with confidence.

Important details about the handbook:

- Families enrolled in the CLTS Program will receive a printed copy in the mail. Newly enrolled families will receive a printed copy in the mail within approximately one month of enrollment date.
- An online version is available anytime in English, Spanish, and Hmong at dhs.wi.gov/library/collection/p-03689.

Wisconsin School for the Deaf - OPEN HOUSE

The WSD is hosting an open house on Friday, May 2, 2025, from 9:30 a.m. to 2:30 p.m. This open house is for any potential student and their families. They will have a campus tour, receive information on programs, and meet WSD staff. Registration is required by April 21, 2025.

To register, click [HERE](#)

Newsletters from Wisconsin Agency and Support Organizations

Family Voices of Wisconsin:

[April Events Calendar](#)

Wisconsin Board for People with Developmental Disabilities:

[April Newsletter](#)

Community of Practice on Autism Spectrum Disorders and Other DD

Adult Transition, Self Advocacy, Communication

Adult Transition, Self Advocacy, Communication

May 1, 2025, 9:00 AM To 11:30 AM, Virtual Gathering

Registration coming soon!

SAVE THE
DATE



Community Of Practice
On Autism Spectrum
Disorders + Other Developmental
Disabilities

Adult Transition, Self Advocacy, Communication
May 1, 2025, 9:00 AM To 11:30 AM, Virtual Gathering

Join the COP ASD DD at a virtual event where we'll be looking at transition, self advocacy, and communication in adulthood.

Registration Information Coming Soon!

From our Supporting Neurodiverse Students Partners

Processing Thinking: Resilience and Flexibility In-Person Training

Students who exhibit behavior that is challenging to adults often struggle with cognitive flexibility and resilience. In this training, participants will learn about the components of flexibility, resilience, and how their practice can influence a student's growth in these areas

- Date: May 1, 2025 Time: 8:30am-3:30pm
- Location: CESA 9 304 Kaphaem Road, Tomahawk, WI 54487
- Cost: \$50.00*

*NO COST to parents and family members of students with IEP's and IDEA Discretionary Grant Employees

[Link to Flyer](#) with more information

[Register Here](#)

Chippewa Falls High School Resource Event

Join Us at Our SPECIAL EDUCATION
PARENT RIGHTS & RESOURCE EVENT
WEDNESDAY, APRIL 30TH, 2025 4:30-7:30 p.m.
CHIPPEWA FALLS HIGH SCHOOL
CARDINAL HALLWAY & AUDITORIUM
[Link to Flyer](#) with more information
RSVP is requested by April 23, 2025. [RSVP HERE](#)



SUMMERTIME!

Here is a listing of available summer camps from Family Voices!
[Summer Camps - Family Voices of Wisconsin](#)

**Click this button to submit a Request Form for Support from
WSPEI Staff**

Are you looking for information, resources or support about
Special Education and IEPs from WSPEI?
Information provided on this form will help us connect you to your local
WSPEI Family-School Partnership Coordinator

.....

Email feedback and ideas of resources and information you would like to see from WSPEI

Email: wspei@cesa12.org

Website: <https://wspei.org/>

Facebook: <https://www.facebook.com/WisconsinStatewideParentEducatorInitiative>

The Wisconsin Statewide Parent-Educator Initiative (CFDA #84.027A) acknowledges the support of the Wisconsin Department of Public Instruction in the development of all products or publications and for the continued support of this federally-funded contract project.



The WSPEI Project

Contact

Subscribe

