

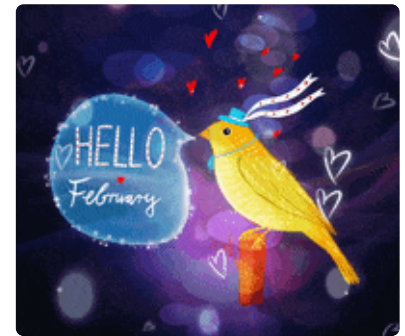


The WSPEI Connector

February, 2025

Communicating Information and Resources for Wisconsin Families and Educators

On Sunday, February 3rd, Punxsutawney Phil saw his shadow, forecasting 6 more weeks of winter in 2025. With that in mind, why not take advantage of these chilly days to explore the valuable resources available to Wisconsin families and educators? This newsletter is packed with a variety of opportunities for learning and growth. Inside, you'll find information about conferences, resources, and events.



Questions about *Extended School Year (ESY)* often comes up as we enter the spring months. We have a guest speaker joining our FE Community of Practice & Learning on February 19th and a short article further down in this newsletter to cover this topic.

And be sure to check out the new date for a repeat of our very popular WPSEI Workshop - "Partnering with Schools on Behavior & Discipline for Students with an IEP"

Pop in and start exploring! ~The WSPEI Project Team

WPSEI Workshops, Book Discussions and
Networking Opportunities

REGISTRATION is available for Partnering with Schools Workshop and all monthly Networks!

All WSPEI learning events are FREE, will be held virtually on ZOOM and are open to families, educators and community agency members.

[Calendar of Events](#)

[Webpage to link directly to Registration Forms](#)

TOPIC SPECIFIC WORKSHOPS

Just announced addition to our schedule!

Partnering with Schools on Behavior and Discipline for Students with IEPs.

This workshop will help participants understand how all policies apply to all children, including those with disabilities; build awareness of IDEA protections for students with disabilities in regard to discipline; understand dispute resolution options in Wisconsin.

- April 24th, 2025 9:00 a.m. - 11:00 a.m.
- All are welcome! Families, Educators, Community Organizations and Agencies

[Link to Flyer with Details and Registration Information](#)

[CLICK HERE FOR REGISTRATION FORM](#)

MONTHLY NETWORKING & LEARNING MEETINGS

REGISTER FOR THESE EVENTS ANYTIME!

Family Support Community

A monthly learning opportunity designed for families and other caregivers supporting a child(ren) with a disability. Two meeting options are available.

- The first Wednesday of the month from 7-8 pm: [REGISTER FOR WEDNESDAY FSC HERE](#)
- The first Thursday of every month from 12-1:00 pm: [REGISTER FOR THURSDAY FSC HERE](#)
- Our Community meetings provide valuable learning opportunities and mutual support.
- These meetings take place from September through May.

Link to:

[FLYER and Registration](#)

[Flyer in Spanish](#)

Family Engagement Community of Practice & Learning

A learning community for educators, administrators, statewide agencies, community partners, and families focusing on family engagement specific topics.

- Meetings are held the third Wednesday of every month September to May, 4:00-5:30 pm.

[Click Here to Register for CoPL](#)

[FLYER with Monthly Topic and Dates](#)

[Flyer in Spanish](#)

February Meeting Topic!

Understanding the Difference Between Extended School Year (ESY) and Summer School Services for Students with Disabilities

February 19th, 4:00-5:30 p.m.

Presenter: Sara Totten, DPI Compliance Consultant

This informative workshop is designed for educators, parents, and administrators to explore the key distinctions between Extended School Year (ESY) services and traditional Summer School programs for students with disabilities. Participants will gain a clear understanding of the purpose, eligibility criteria, and goals of each service, and how they contribute to supporting students' educational needs during the summer months. Join us to learn about

- Legal framework behind ESY services under the law
- How ESY is designed to prevent regression and promote continuity in learning
- Key differences in eligibility for ESY versus Summer School
- The structure, curriculum, and support services provided in each program

[Link to Information Flier for February Meeting](#)

Wisconsin Department of Public Instruction

News, Information and Resources

Children's Wisconsin Bullying Prevention Resources for Caregivers

Parents Act Now! bullying prevention resources for parents and caregivers

This content is specifically designed to help parents and caregivers navigate bullying. They learn what bullying is, how to talk to their kids about it, and what to do if their child is being bullied.

[Please share this link with parents and caregivers in your school community.](#)

DPI's Student Services/Prevention and Wellness team is proud to share the ["Student Perspectives on Mental Health" video](#), which features Wisconsin youth sharing insights on what mental health means to them, emphasizing the importance of self-care practices and community support in maintaining their wellness. They also highlight how educators and schools play a crucial role in fostering positive mental health.

Norovirus Continues to Impact Schools

As cases and outbreaks of Norovirus continue to impact schools, DPI has created a separate [webpage for Norovirus](#). The webpage offers information and resources for school nurses and school administrators to use to educate families, staff, students, and manage cases.

Want to stay informed?

Visit the [DPI News Room](#)

[Federal Grant and Loan Pause – What It Means for Schools and Funding](#)

Indicator 8 Family Engagement Survey - Survey Opens in February!

Each year, the WI Department of Public Instruction (DPI) requires 20% of Wisconsin school districts to take part in the Federal Indicator 8 Family Engagement Survey data collection as part of the district's self-assessment. The survey is offered to all parents of children ages 3-17 who are receiving special education services and support through an Individualized Education Program

(IEP). Indicator 8 identifies the *percentage of parents with a child receiving special education services who report that schools facilitated parent involvement as a means of improving services and results for children with disabilities*. The survey is confidential. DPI will use the survey results to improve services to children and youth with IEPs and their families.

To find out if your school district is taking part in the survey, click here: [2024-2025 LEAs/School Districts in Indicator 8 Survey](#).

Interested in learning more about the Indicator 8 Survey? Go to DPI's Indicator 8 Family Engagement Survey webpage [here](#).

WISCONSIN CONFERENCES

[23rd Annual Wisconsin Transition Conference](#)

Join hundreds of your colleagues at the 23rd Annual Transition Conference. In addition to the keynote speakers, the conference will have over 20 breakout sessions. There also will be opportunities to network with peers.

[REGISTRATION](#)

Dates: February 13-14, 2025

Location: Kalahari Resort and Convention Center, Wisconsin Dells, WI

Pre-Conference Session February 12th, 2025, 4:00-5:30 pm

Join the Transition Improvement Grant (TIG), Division of Vocational Rehabilitation (DVR), and the Wisconsin Statewide Parent-Educator Initiative (WSPEI) on February 12th, 2025 from 4:00-5:30 pm at the Kalahari Resort and Convention Center for this dynamic and interactive kickoff to the Wisconsin Transition Conference!

[36th Annual Autism Conference](#)

The statewide conference brings the autism community together to learn, connect, and belong. It's a place where autistic adults, parents and family members, and professionals come to share experiences and learn together.

[REGISTRATION](#)

Dates: April 3-5, 2025

Location: Kalahari Convention Center, Wisconsin Dells, WI

[Circles of Life Conference](#)

Dates: May 8-9, 2025

Location: Wilderness Resort, Wisconsin Dells, WI

Circles of Life is Wisconsin's annual conference for families who have children with disabilities and the professionals who support them.

Annual Wisconsin "Staycation" and Autism Summit

Dates: Friday, July 11 – Saturday, July 12, 2025

Location: Wilderness Resort, Wisconsin Dells, WI

Call for Presenter proposals - [click here to submit](#)

We encourage all interested individuals and organizations within the Autism community to submit their proposals for this exciting event. This conference aims to be a valuable resource for attendees, and we look forward to reviewing your submissions.

Deadline for Proposal Submissions: Friday, April 11, 2024

Mark your Calendars for the 2025 Endless Possibilities conference!

[Endless Possibilities Conference Wisconsin | WI FACETS](#)

Keynote: Mike Hipple ([WI AAC Network](#))

Bridging Success: Empowering Diverse Learners

Through accommodations, technology and innovation, educators and families can help students thrive in school and prepare for success after school. We will learn about Augmentative and Assistive Communication, how to support engaged readers, and learn what others are doing to support positive outcomes for students with disabilities to achieve their goals.

Date: Tuesday, August 5, 2025, 8:30 a.m. - 3:00 p.m.

Location: Waukesha Area Technical College, Pewaukee, WI

Interested in presenting at the conference? <https://www.surveymonkey.com/r/ZM9M2YM>

- Please submit your proposal by Thursday, February 20, 2025



WI FACETS

WI FACETS is Wisconsin's Parent Training and Information Center (PTI) funded through the US Department of Education, Office of Special Education Programs. WI FACETS has a large variety of resources, upcoming trainings, and webinar recordings to help families navigate special education.

Check out the WI FACETS [Training Calendar](#), WI FACETS [Webinar Recordings](#) as well as WI FACETS [resources webpages](#).

This month's newsletter has a focus on Intellectual Disabilities and after high school options:

[February Newsletter - English](#)

[February Newsletter - Spanish](#)

Wisconsin Board for People with Developmental Disabilities (WI-BPDD)

Stay up date - visit their website often (linked in title above)

[January Newsletter](#)

[February Newsletter](#)

Save the Date:

Disability Advocacy Day is a day-long event focused on connecting Self-Advocates with their legislators to talk about issues that matter to them. Join us in-person in Madison on **March 12th, 2025** to meet with your elected officials!

[Registration](#) now open!

Registration is free but required to attend. Register by February 26th.

Spring Election - April 1, 2025

What is the State Superintendent of Public Instruction?

- Head of Wisconsin Department of Public Instruction
- Oversees public schools and libraries
- Seeks and promotes ways to improve schools
- Evaluates performance of schools
- Elected to serve a four year term
- This is a nonpartisan office with no term limit



What does the Department of Public Instruction Do?

| | | |
|---|--|--|
| <p>Provides guidance and technical support to public schools</p> | <p>Reviews and approves library staff, school administrator, and educator training programs and licenses.</p> | <p>Ensures that school districts meet their responsibilities to students with disabilities as required by the Individuals with Disabilities Education Act (IDEA).</p> |
| <p>Proposes a state education budget to the governor.</p> | <p>Distributes funding to public schools and libraries.</p> | <p>Administers the Wisconsin Educational Services Program for the Deaf and Hard of Hearing and the Wisconsin Center for the Blind and Visually Impaired</p> |

The state superintendent of public instruction makes an impact on Wisconsinites' lives. Their decisions impact:

| | | | | |
|----------------------------------|---|-------------------------|---------------------------------|----------------------------------|
| <p>School curriculum choices</p> | <p>Education for children with disabilities</p> | <p>Educator quality</p> | <p>Public library resources</p> | <p>Educational opportunities</p> |
|----------------------------------|---|-------------------------|---------------------------------|----------------------------------|

How do you decide who to vote for?

| | | |
|--|--|---|
| <p>1. Decide what you are looking for in a candidate</p> <ul style="list-style-type: none"> • What issues are important to you? • What qualities do you want in a leader? • Which candidate's priorities align with your values? | <p>2. Learn about the candidates</p> <ul style="list-style-type: none"> • Visit their websites. Watch candidate forums and interviews. Visit VOTE411.org. Seek other nonpartisan sources for information. • What are their qualifications? • What are their priorities? | <p>3. Sort it out</p> <ul style="list-style-type: none"> • Which candidate's priorities and views on the role best match your own views? • Who seems most prepared for the job? • Who has the leadership qualities you are looking for? |
|--|--|---|



disabilityrights | WISCONSIN

DRW Voter Hotline 844-DIS-VOTE / 844-347-8683

www.disabilityvote.org/

www.facebook.com/wisconsin Disability Vote/

The Wisconsin Disability Vote Coalition is a project of Disability Rights Wisconsin and the Wisconsin Board for People with Developmental Disabilities.

Wisconsin Educational Opportunity Program and Marquette University

Pre-College Resource Fair!

Date: February 10, 2025, 9:00 a.m. - 2:00 p.m.

Location: Marquette University, Monaghan Grand Ballroom

1442 West Wisconsin Avenue, Milwaukee, WI 53233

The opportunity to talk with representatives from Wisconsin colleges, universities, community partners, and other organizations about the many opportunities they offer students in preparation for college and career readiness!

[Pre-College Fair Information and Registration Flier](#)

Wauwatosa School District Transition Resource Fair

Date: Wednesday, February 12, 2025, 6:00-8:00PM

Location: Wauwatosa West High School

Project Search Open Houses!

Southeast Wisconsin Options

Date: Wednesday, February 19, 2025, 5:30 p.m. - 7:00 p.m.

Location: Zoofari Conference Center, 9715 W Bluemound Rd, Milwaukee WI

Sites that will be represented:

Children's Hospital Wisconsin

Froedert and MCW

Milwaukee County Zoo

ProHealthCare Waukesha Memorial Hospital

Kalahari Resort & Convention Center

Date: Thursday, February 20, 2025, 11:30 AM - 1:30 PM

Location: Kalahari Resort, 1305 Kalahari Dr., Baraboo, WI 53913 Room: Suite F

[Flier with more information](#)



Project | SEARCH®

Now taking applications for the
2025 - 2026 program year

Apply Online Today!



**Calling All
Prospective Interns!**

**OPEN
HOUSE**

Wednesday February 19th

5:30 - 7:00 PM

Zoofari Conference Center
9715 W Bluemound Rd,
Milwaukee, WI 53213

Join us in-person to learn
more about a job training
and educational program
for young adults with
disabilities.

**Project SEARCH sites
represented:**

Children's Wisconsin

Froedert and MCW

ProHealth Care Waukesha Memorial

Milwaukee County Zoo



PROHEALTH CARE



Community of Practice on Autism Spectrum Disorder and Developmental Disabilities

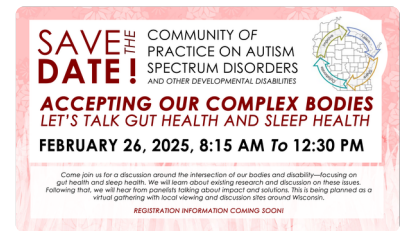
Accepting Our Complex Bodies: Let's Talk Gut Health and Sleep Health

Save the Date!

DATE: February 26, 2025, 8:15am-12:30pm

Registration and Remote site information coming soon!

If you are interested in hosting a site, please complete this [form](#).



🤔 Have you ever wondered... "What is Extended School Year (ESY)"?

Extended School Year (ESY). ESY services are required, special education and related services provided beyond the limits of the school term, in accordance with the child's IEP, and at no cost to the parents. These services are necessary in order to provide a free appropriate public education (FAPE).

- [Information Update Bulletin 10.02 Extended School Year \(ESY\) Services for Children with Disabilities](#) distinguishes between required ESY services and permissive summer school. The bulletin also defines the requirements for permissive summer school programs.
- Additional information about ESY can be found in the [Special Education in Plain Language beginning on page 35](#).
- [WI FACETS Webinar IEP 9: IEP Revisions & Extended School Year](#) addresses ESY beginning at 22 minutes and 30 seconds.

✨ Spotlight on some Wisconsin Family Support Organizations

Parent to Parent of Wisconsin

Our mission: Help parents find a one-to-one connection with another parent, who know firsthand about the feelings and realities that come with having a child with special needs.

[Parent to Parent of Wisconsin](#)

Parents United Consortium

FREE Screening of *The Ride Ahead* - a film by Sam and David Habib

Wednesday, March 5, 2025 • 6-8:30 pm

Sharon Lynne Wilson Center for the Arts, 3270 Mitchell Park Dr, Brookfield, WI 53045

THE RIDE AHEAD illustrates the compelling power of one person truly determined to live life on his own terms as he navigates the barriers before him, while energizing those around him.

Together with a loving family and a community of friends, Samuel pushes forth his life's "ride ahead."

[REGISTER HERE](#)

Alianza Latina Aplicando Soluciones(ALAS)

ALAS is a non-profit organization dedicated to promoting the independence of families of children and youth with diverse abilities in Milwaukee by providing educational workshops, parent support groups, family events, community building activities, and service referrals amongst other services and supports.

[February Newsletter in English](#)

[February Newsletter in Spanish](#)

[February Events](#)

Community Outreach Wisconsin

Community TIES is a UW-Waisman Center behavioral support program serving Dane County children/families, adolescents and adults with intellectual and developmental disabilities (IDD) who live in the community. Our mission is to address behavioral, psychological, and emotional needs using therapeutic approaches that assure continued participation in supported community life.

[Community TIES](#)

Wisconsin Sibs

SibDays of Summer

Welcome to SibDays of Summer, our special day camp designed specifically for children ages 6-12 who have a sibling with disabilities. This week-long or 2-day event (depending on location) promises to offer a supportive and enjoyable environment where children can engage in a variety of fun and meaningful activities.

Please note that Sib Camp has a deposit policy, and there are specific codes available for county funding or financial assistance. We encourage you to review the linked Summer Program Code document to ensure you use the appropriate code during registration.

[DOCUMENT EXPLAINING USE OF CODES](#)

[REGISTRATION](#)

Dates and Locations:

Fox Cities: July 14-18, 2025, 10:00am-3:00pm at Plamann Park

Milwaukee: July 17 & 18, 2025, 10:00am-3:00pm, Location TBD

Madison: July 14 & 15, 2025, 10:00am-3:00pm, WG Lunney Lake Farm Park

Sib Camp is designed for children aged 9-14 who have a sibling with disabilities. The camp offers a variety of traditional activities such as archery, swimming, canoeing, and crafts. Located on the picturesque Green Lake lakefront, it provides a beautiful setting for all activities. Campers will stay in cabins with 9 other children of similar age, creating a comfortable and engaging environment to foster new friendships.

Location: Daycholah Center - UCCI, W1000 Spring Grove Rd, Ripon, WI 54971

Date and time: Sun, Aug 3, 2025 3:00 PM - Thu, Aug 7, 2025 12:00 PM

Organizer: Tessa Lewis, (920) 393-7333, tessa@wisconsibs.org

[REGISTRATION](#)

💡Wisconsin Statewide Parent Educator Initiative Supports and Services

Are you looking for information, resources or support about Special Education and IEPs from WSPEI?

Would you like to bring one of our dynamic workshops to your district, agency or family group? Information provided on this form will help us connect you to your local WSPEI Family-School Partnership Coordinator:

[Click this link for Support Request Form](#)



Contact us!

Email feedback and ideas of resources and information you would like to see from WSPEI

Email: wspei@cesa12.org

Website: <https://wspei.org/>

Facebook:

<https://www.facebook.com/WisconsinStatewideParentEducatorInitiative>

The Wisconsin Statewide Parent-Educator Initiative (CFDA #84.027A) acknowledges the support of the Wisconsin Department of Public Instruction in the development of all products or publications and for the continued support of this federally-funded contract project.



The WSPEI Project

Contact

Subscribe

